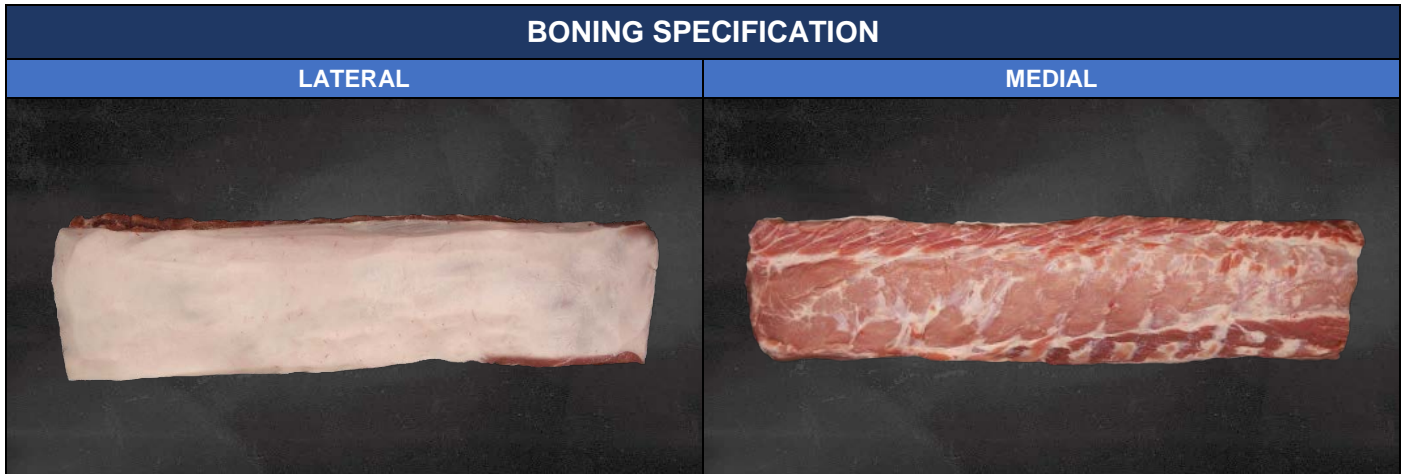


| | |
|-------------|----------------------------|
| Code | 372400J0 |
| Description | Striploin Moisture Infused |



| | | |
|----------------|-----------------------------|--|
| CARCASE | SPECIFICATION POINTS | <ul style="list-style-type: none"> Grade: 1, 2, 3, 4, 5 P2 fat depth: > 0 mm Carcase weight: Any weight |
| | DEFECTS | <ul style="list-style-type: none"> Carcase hair Blood clot/bruise Foreign material (grease, rail dust, plastic, metal etc.) Zero tolerance defects (faeces, abscesses, ingesta etc.) |

| | | |
|-----------------------------------|-----------------------------|---|
| CUTTING FURTHER PROCESSING | PROCESS STEPS | <ul style="list-style-type: none"> Cut square between 4th-5th thoracic and 5th-6th lumbar vertebrae Remove sternum bone and soft bones Remove chine bones Fleece ribs Remove feather bones Remove loin from middle by a cut parallel to the dorsal edge, measured at a specified distance from the ventral edge of the eye loin Remove rind Trim to < 3 mm fat depth Pump to moisture infusion rate: 10-12% |
| | SPECIFICATION POINTS | <ul style="list-style-type: none"> Fat depth: < 3 mm Moisture infusion rate: 10-12% |
| | DEFECTS | <ul style="list-style-type: none"> Rind Excess fat Bone chips, cartilage and glands Foreign material (grease, rail dust, plastic, metal etc.) |



| | | | | | |
|-----------------------------------|----------------|----------------|--------------------------------|-------------------------|---------------|
| Document Name | Document Code | Version Number | Written/Revised By | Reviewed By | Authorised By |
| Product Specification 372400J0 | WP.QA.SPEC.165 | 1.0 | Stephanie Po-Myat Thomas Ng | Scott Noon Matt Troy | Tom Stewart |

| | |
|-------------|----------------------------|
| Code | 372400J0 |
| Description | Striploin Moisture Infused |

| PACKING SPECIFICATION | |
|--|--|
| LATERAL | MEDIAL |
|  |  |

| KEY SPECIFICATION POINTS | | |
|---|---|--|
| PRIMARY PACKAGING | SECONDARY PACKAGING | PACKING FORMAT |
|  |  |  |

| | | |
|----------------|-----------------------------|---|
| BAGGING | SPECIFICATION POINTS | <ul style="list-style-type: none"> • Bagging format: 1 soaker pad/piece and 1 piece/bag |
| | DEFECTS | <ul style="list-style-type: none"> • Incorrect or damaged packaging or label • Piece and soaker pad not aligned in bag • Leaking vacuum • Poor or loose shrink (pack not tight) |

| | | |
|----------------|-----------------------------|---|
| PACKING | SPECIFICATION POINTS | <ul style="list-style-type: none"> • Packing format: 5 packs/carton • Digi-label PLU: 724 |
| | DEFECTS | <ul style="list-style-type: none"> • Incorrect or damaged packaging or label • Label not aligned on carton • Mixed product |

| ADDITIONAL REQUIREMENTS | | |
|---|--|--|
| BILL OF MATERIALS | LABELLING | MICROBIOLOGICAL |
| 6001491 CARTON STACK FLOW BASE 130MM NEW (QTY:1) 6003073 LID BRUEMAR GOLD 4 CNR GLUED 573x373x60 (QTY:1) 6003155 BRUEMAR GOLD 250X775 A600 COOL 50UM (QTY:5) 6001375 SOAKER PAD 375x75mm BLACK (QTY:5) 6000923 LABEL BLANK 60X43MM (QTY:5) 6001353 LABEL WP CARTON 70X148 (EXT ADHESIVE) | EAN: N/A TUN: N/A Claims: N/A Allergens: N/A Country of Origin: N/A Label Format: 39 (NSW) Price: N/A Max. Shelf Life: 28 days Min. Life on Receipt: N/A | Standard Plate Count: < 100,000 cfu/g E. coli: < 100 cfu/g Coliforms: < 1,000 cfu/g Salmonella: < 0 cfu/25 g Enterobacteriaceae: N/A Yeast: N/A Mould: N/A Bacillus Cereus: N/A |

| | | | | | |
|--------------------------------|----------------|----------------|--------------------------------|-------------------------|---------------|
| Document Name | Document Code | Version Number | Written/Revised By | Reviewed By | Authorised By |
| Product Specification 372400J0 | WP.QA.SPEC.165 | 1.0 | Stephanie Po-Myat Thomas Ng | Scott Noon Matt Troy | Tom Stewart |